

Edward Burne-Jones and William Morris in the United States: a study of influence

Even stained glass windows created by Edward Burne-Jones and William Morris in 1874 and 1885 remain in situ in the USA. They are located in six churches in six cities in two states, New York and Massachusetts...

Windows designed by Edward Burne-Jones and made by Morris & Co. have a substantial cachet in the USA. But American glass historians still train primarily in the decorative arts rather than architecture...

Burne-Jones, Morris, and English stained glass in Boston Boston's first connection with Burne-Jones and Morris and their circle was personal: Charles Eliot Norton (1827-1908), first lecturer in Fine Arts at Harvard University (1874-99)...

Burne-Jones... hoarded photographs of Italian paintings and drawings, asking friends and associates traveling abroad to send him catalogues of engravings, entreating Charles Eliot Norton for example to 'choose as you would for yourself... You know what I like - all helpful necessities of modeling and sweep head-drawing, and nudes by Leonardo and M. Angelo and Raphael - all round, fat babies - O you know so well...'

And in a study of Morris and Boston Lindsay Leard-Coolidge writes: In a letter to Ruskin from September 1648, during a year-long stay in London, Norton wrote that he had been seeing a 'good deal of Morris, who combines in a wonderful measure the solid earthly qualities of the man of practical affairs, with the fine perceptions and quick fancy of a poet.'

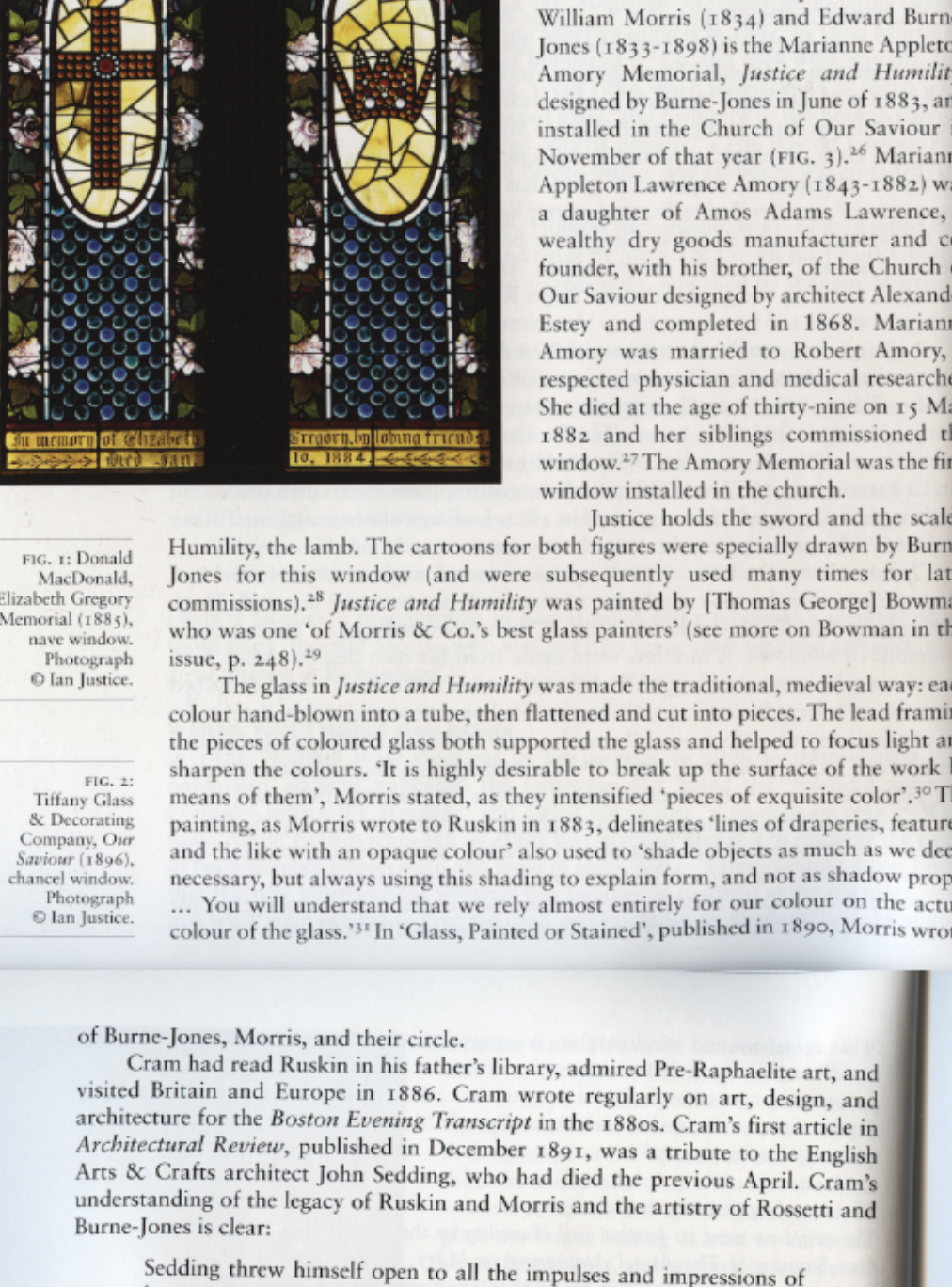


FIG. 11. Detail of the window in the Trinity Church, Boston, showing the figures of Justice and Humility. The window is a large, multi-paned stained glass window with intricate designs and figures.

The window in the Trinity Church, Boston, designed by William Morris (1831-1896) and Edward Burne-Jones (1833-1908) is a fine example of the Arts and Crafts movement. It features intricate designs and figures of Justice and Humility. The window is a large, multi-paned stained glass window with intricate designs and figures.

The window in the Trinity Church, Boston, designed by William Morris (1831-1896) and Edward Burne-Jones (1833-1908) is a fine example of the Arts and Crafts movement. It features intricate designs and figures of Justice and Humility. The window is a large, multi-paned stained glass window with intricate designs and figures.

The window in the Trinity Church, Boston, designed by William Morris (1831-1896) and Edward Burne-Jones (1833-1908) is a fine example of the Arts and Crafts movement. It features intricate designs and figures of Justice and Humility. The window is a large, multi-paned stained glass window with intricate designs and figures.

The window in the Trinity Church, Boston, designed by William Morris (1831-1896) and Edward Burne-Jones (1833-1908) is a fine example of the Arts and Crafts movement. It features intricate designs and figures of Justice and Humility. The window is a large, multi-paned stained glass window with intricate designs and figures.

The window in the Trinity Church, Boston, designed by William Morris (1831-1896) and Edward Burne-Jones (1833-1908) is a fine example of the Arts and Crafts movement. It features intricate designs and figures of Justice and Humility. The window is a large, multi-paned stained glass window with intricate designs and figures.

The window in the Trinity Church, Boston, designed by William Morris (1831-1896) and Edward Burne-Jones (1833-1908) is a fine example of the Arts and Crafts movement. It features intricate designs and figures of Justice and Humility. The window is a large, multi-paned stained glass window with intricate designs and figures.

The window in the Trinity Church, Boston, designed by William Morris (1831-1896) and Edward Burne-Jones (1833-1908) is a fine example of the Arts and Crafts movement. It features intricate designs and figures of Justice and Humility. The window is a large, multi-paned stained glass window with intricate designs and figures.

The window in the Trinity Church, Boston, designed by William Morris (1831-1896) and Edward Burne-Jones (1833-1908) is a fine example of the Arts and Crafts movement. It features intricate designs and figures of Justice and Humility. The window is a large, multi-paned stained glass window with intricate designs and figures.

The window in the Trinity Church, Boston, designed by William Morris (1831-1896) and Edward Burne-Jones (1833-1908) is a fine example of the Arts and Crafts movement. It features intricate designs and figures of Justice and Humility. The window is a large, multi-paned stained glass window with intricate designs and figures.

The window in the Trinity Church, Boston, designed by William Morris (1831-1896) and Edward Burne-Jones (1833-1908) is a fine example of the Arts and Crafts movement. It features intricate designs and figures of Justice and Humility. The window is a large, multi-paned stained glass window with intricate designs and figures.

The window in the Trinity Church, Boston, designed by William Morris (1831-1896) and Edward Burne-Jones (1833-1908) is a fine example of the Arts and Crafts movement. It features intricate designs and figures of Justice and Humility. The window is a large, multi-paned stained glass window with intricate designs and figures.

The window in the Trinity Church, Boston, designed by William Morris (1831-1896) and Edward Burne-Jones (1833-1908) is a fine example of the Arts and Crafts movement. It features intricate designs and figures of Justice and Humility. The window is a large, multi-paned stained glass window with intricate designs and figures.

The window in the Trinity Church, Boston, designed by William Morris (1831-1896) and Edward Burne-Jones (1833-1908) is a fine example of the Arts and Crafts movement. It features intricate designs and figures of Justice and Humility. The window is a large, multi-paned stained glass window with intricate designs and figures.

The window in the Trinity Church, Boston, designed by William Morris (1831-1896) and Edward Burne-Jones (1833-1908) is a fine example of the Arts and Crafts movement. It features intricate designs and figures of Justice and Humility. The window is a large, multi-paned stained glass window with intricate designs and figures.

The window in the Trinity Church, Boston, designed by William Morris (1831-1896) and Edward Burne-Jones (1833-1908) is a fine example of the Arts and Crafts movement. It features intricate designs and figures of Justice and Humility. The window is a large, multi-paned stained glass window with intricate designs and figures.

The window in the Trinity Church, Boston, designed by William Morris (1831-1896) and Edward Burne-Jones (1833-1908) is a fine example of the Arts and Crafts movement. It features intricate designs and figures of Justice and Humility. The window is a large, multi-paned stained glass window with intricate designs and figures.

The window in the Trinity Church, Boston, designed by William Morris (1831-1896) and Edward Burne-Jones (1833-1908) is a fine example of the Arts and Crafts movement. It features intricate designs and figures of Justice and Humility. The window is a large, multi-paned stained glass window with intricate designs and figures.

The window in the Trinity Church, Boston, designed by William Morris (1831-1896) and Edward Burne-Jones (1833-1908) is a fine example of the Arts and Crafts movement. It features intricate designs and figures of Justice and Humility. The window is a large, multi-paned stained glass window with intricate designs and figures.

The window in the Trinity Church, Boston, designed by William Morris (1831-1896) and Edward Burne-Jones (1833-1908) is a fine example of the Arts and Crafts movement. It features intricate designs and figures of Justice and Humility. The window is a large, multi-paned stained glass window with intricate designs and figures.

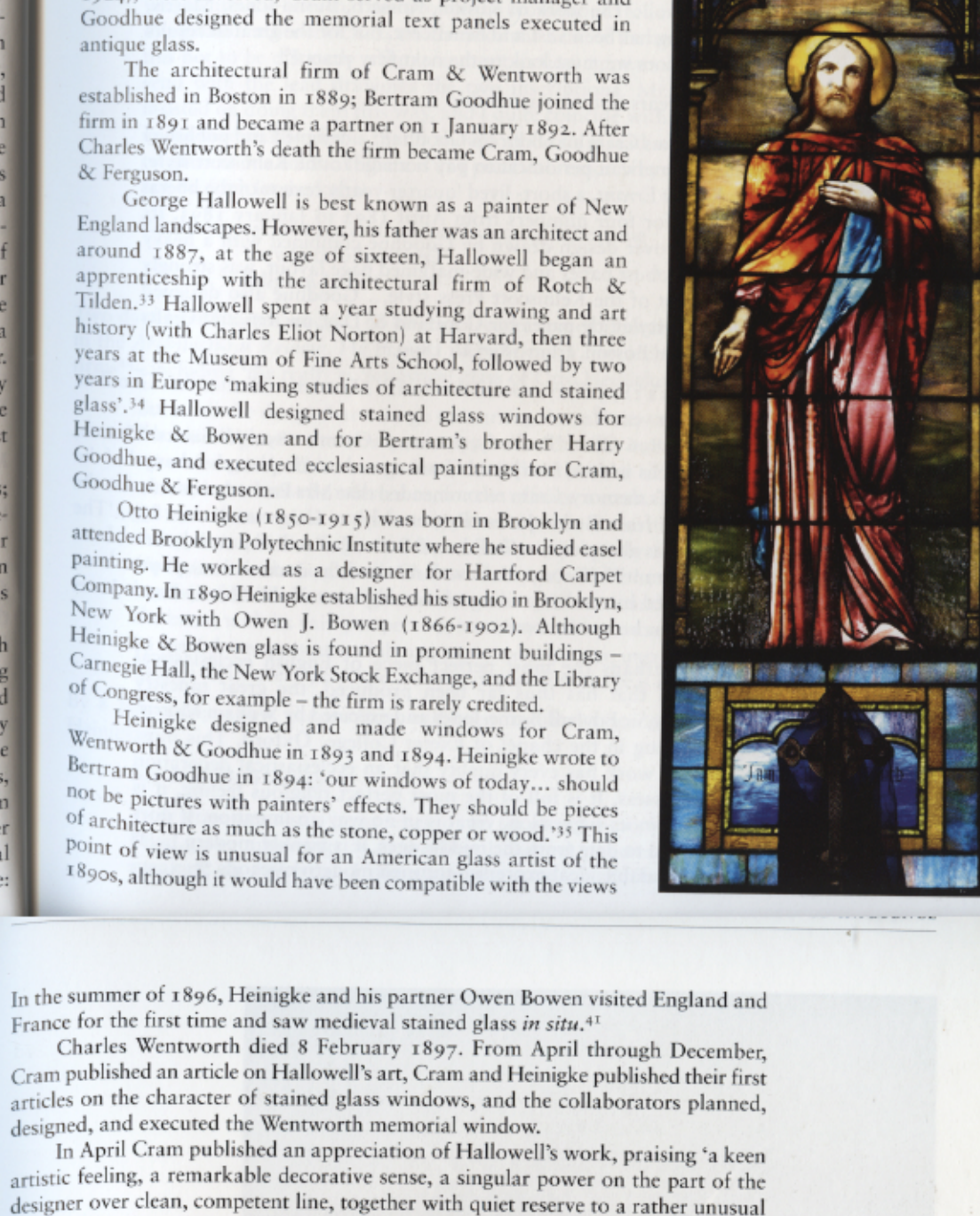


FIG. 12. Detail of the window in the Trinity Church, Boston, showing the figures of Justice and Humility. The window is a large, multi-paned stained glass window with intricate designs and figures.

The window in the Trinity Church, Boston, designed by William Morris (1831-1896) and Edward Burne-Jones (1833-1908) is a fine example of the Arts and Crafts movement. It features intricate designs and figures of Justice and Humility. The window is a large, multi-paned stained glass window with intricate designs and figures.

The window in the Trinity Church, Boston, designed by William Morris (1831-1896) and Edward Burne-Jones (1833-1908) is a fine example of the Arts and Crafts movement. It features intricate designs and figures of Justice and Humility. The window is a large, multi-paned stained glass window with intricate designs and figures.

The window in the Trinity Church, Boston, designed by William Morris (1831-1896) and Edward Burne-Jones (1833-1908) is a fine example of the Arts and Crafts movement. It features intricate designs and figures of Justice and Humility. The window is a large, multi-paned stained glass window with intricate designs and figures.

The window in the Trinity Church, Boston, designed by William Morris (1831-1896) and Edward Burne-Jones (1833-1908) is a fine example of the Arts and Crafts movement. It features intricate designs and figures of Justice and Humility. The window is a large, multi-paned stained glass window with intricate designs and figures.

The window in the Trinity Church, Boston, designed by William Morris (1831-1896) and Edward Burne-Jones (1833-1908) is a fine example of the Arts and Crafts movement. It features intricate designs and figures of Justice and Humility. The window is a large, multi-paned stained glass window with intricate designs and figures.

The window in the Trinity Church, Boston, designed by William Morris (1831-1896) and Edward Burne-Jones (1833-1908) is a fine example of the Arts and Crafts movement. It features intricate designs and figures of Justice and Humility. The window is a large, multi-paned stained glass window with intricate designs and figures.

The window in the Trinity Church, Boston, designed by William Morris (1831-1896) and Edward Burne-Jones (1833-1908) is a fine example of the Arts and Crafts movement. It features intricate designs and figures of Justice and Humility. The window is a large, multi-paned stained glass window with intricate designs and figures.

The window in the Trinity Church, Boston, designed by William Morris (1831-1896) and Edward Burne-Jones (1833-1908) is a fine example of the Arts and Crafts movement. It features intricate designs and figures of Justice and Humility. The window is a large, multi-paned stained glass window with intricate designs and figures.

The window in the Trinity Church, Boston, designed by William Morris (1831-1896) and Edward Burne-Jones (1833-1908) is a fine example of the Arts and Crafts movement. It features intricate designs and figures of Justice and Humility. The window is a large, multi-paned stained glass window with intricate designs and figures.

The window in the Trinity Church, Boston, designed by William Morris (1831-1896) and Edward Burne-Jones (1833-1908) is a fine example of the Arts and Crafts movement. It features intricate designs and figures of Justice and Humility. The window is a large, multi-paned stained glass window with intricate designs and figures.

The window in the Trinity Church, Boston, designed by William Morris (1831-1896) and Edward Burne-Jones (1833-1908) is a fine example of the Arts and Crafts movement. It features intricate designs and figures of Justice and Humility. The window is a large, multi-paned stained glass window with intricate designs and figures.

The window in the Trinity Church, Boston, designed by William Morris (1831-1896) and Edward Burne-Jones (1833-1908) is a fine example of the Arts and Crafts movement. It features intricate designs and figures of Justice and Humility. The window is a large, multi-paned stained glass window with intricate designs and figures.

The window in the Trinity Church, Boston, designed by William Morris (1831-1896) and Edward Burne-Jones (1833-1908) is a fine example of the Arts and Crafts movement. It features intricate designs and figures of Justice and Humility. The window is a large, multi-paned stained glass window with intricate designs and figures.

The window in the Trinity Church, Boston, designed by William Morris (1831-1896) and Edward Burne-Jones (1833-1908) is a fine example of the Arts and Crafts movement. It features intricate designs and figures of Justice and Humility. The window is a large, multi-paned stained glass window with intricate designs and figures.

The window in the Trinity Church, Boston, designed by William Morris (1831-1896) and Edward Burne-Jones (1833-1908) is a fine example of the Arts and Crafts movement. It features intricate designs and figures of Justice and Humility. The window is a large, multi-paned stained glass window with intricate designs and figures.

The window in the Trinity Church, Boston, designed by William Morris (1831-1896) and Edward Burne-Jones (1833-1908) is a fine example of the Arts and Crafts movement. It features intricate designs and figures of Justice and Humility. The window is a large, multi-paned stained glass window with intricate designs and figures.

The window in the Trinity Church, Boston, designed by William Morris (1831-1896) and Edward Burne-Jones (1833-1908) is a fine example of the Arts and Crafts movement. It features intricate designs and figures of Justice and Humility. The window is a large, multi-paned stained glass window with intricate designs and figures.

The window in the Trinity Church, Boston, designed by William Morris (1831-1896) and Edward Burne-Jones (1833-1908) is a fine example of the Arts and Crafts movement. It features intricate designs and figures of Justice and Humility. The window is a large, multi-paned stained glass window with intricate designs and figures.

The window in the Trinity Church, Boston, designed by William Morris (1831-1896) and Edward Burne-Jones (1833-1908) is a fine example of the Arts and Crafts movement. It features intricate designs and figures of Justice and Humility. The window is a large, multi-paned stained glass window with intricate designs and figures.